



Live Sports Production - Core Production Over IP

An integrated, highly space efficient sports production system for IP infrastructures

HD-3Gbp/s solution upgradeable to UHD

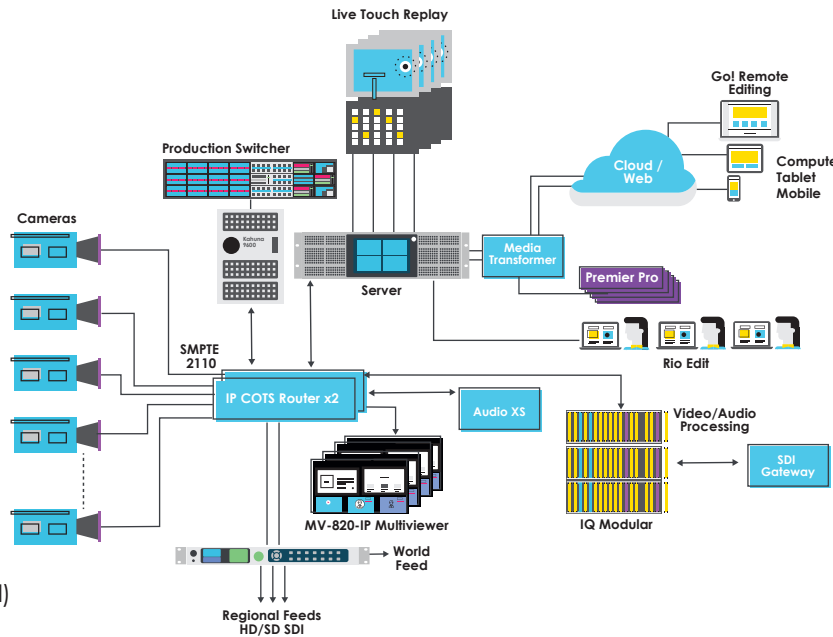
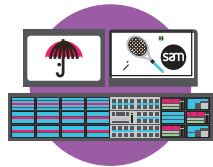


IP Standards

- SMPTE 2110 ready plus SMPTE 2022-6 support for legacy interoperability
- Video Services Forum TR-03 & TR-04
- Timing via SMPTE 2059-1/2
- Audio over IP using AES-67 Ravenna & Dante

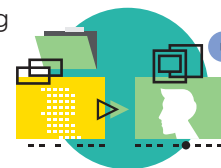
Live Production Switching - Kahuna 9600

- UHD ready 3Gbp/s switchers
- Powerful modular Maverik control panel
- FormatFusion3 for multi-format productions
- Supports SDI, 12G-SDI, IP inputs and outputs
- Up to 24 M/Es
- Fully IP input & output configurations available



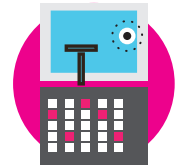
Upgrade to UHD

- Reconfiguration of SAM components only
- 3Gbp/s Record & replay with UHD upscaling
- Rescale production to UHD (cameras and routing capacity)
- No change to operational interface
- UHD upgrade calculated in initial design



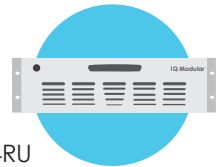
Replay/Editing - LiveTouch

- Scalable IT-based solution
- Intuitive & simple control panel
- Designed for demanding sports replay
- Integrated editing
- Integrated telestration & graphics



Processing

- Modular-based signal processing
- Audio & video over IP
- Choice of form factors, 1RU, 3RU, 4RU
- High density SDI-IP gateways
- Full range of audio and video processing functions



Monitoring & Control

- Choice of standalone, modular, or router integrated multiviewers
- Excellent picture quality and live performance
- Internal & external UMD & tally support
- Mix HD, 3G & UHD sources & displays
- Unlimited desktop multiviewer expansion
- Fully IP I/O on standalone multiviewers



Routing

- Cisco, Arista, Juniper & others (subject to approval)
- IGMP v.3 and PIM-SSM support required
- Redundant controllers using destination-based switching
- Third party equipment integration
- Non-blocking architecture

